

# HIGHLIGHTS - NEW PRODUCTS

for MGA, AUSTIN HEALEY, MGB...

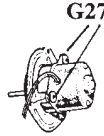
**FUEL PIPES AND FITTINGS** for AH100 and all 6 cyl. models  
Stainless steel (annealed) 5/16" O.D. pipe with brass fittings  
in B.S.P. threads. state year and model.

Price quoted upon request.

**G27 RUBBER GROMMETS** - heater motor to mounting plate.

Will service just about every Smiths motor..... 3 per motor.

**\$1.80 for the set of three.** (make note of this addition on page  
26 of the 10th addition catalogue)



**M137-I.D. TAGS for S.U. CARBS** - Two sizes have been reproduced using  
new tooling to make the proper shapes and stamp the correct style and size  
characters on them. Tags are made using .031" Alum. as original. The follow-  
ings pre-stamped/numbered tags are available as standard at **\$4.50ea.** \*Specify  
or state particulars about your car(s). Tags not listed as a standard - shown  
below - will be subject to a **\$3.50** additional charge for stamping up to 2 plates  
with same number. Inquire.

M137-01



M137-02



MGA - AUC784, AUC877, AUC943, \* (AUC943F/AUC943R set for MkII  
-\$10.00)

Austin Healey - AUC718, AUC815, AUC866, AUC914, AUC963, AUC935, AUC981F,  
AUC981R, AUD124F, AUC124R, AUC863. \* (BN7/BT7 Tri-Carb AUD18-F/C/R avail-  
able as a 3 set only - \$20.00 for set.)

MGB - AUD52F, AUD52R, AUD 135F, AUD135R, AUD278F, AUD278R, AUD265F & R

**CLIPS** - for heater/ventilation control cables as used on SMITHS units. AH, MG, and

**M-138** many others. Reproductions are made using the correct thickness (15 gauge  
steel) punched and formed using new tooling. Supplied cad. plated - silvertone  
finish. MGA and "Big" Healeys use 3 M138 and 1 M139 clips.



**M-139 \$2.75ea. /\$10.00 for 4 kit.**



(note-M138 Clip used to fix cables at box, control switch and external ducts.

M139 Clip used to fix cable at water valve.)

**STAINLESS STEEL CLAMPS for EXHAUST PIPES**

- Extremely strong and durable our clamps are made to  
duplicate the original British style steel units which were  
designed for low clearance vehicles, etc. We were careful  
to get the blank sizes and forming tooling correct in order  
to provide a tight strong fit. S.S. screw with steel lock nut  
included. (We have been unable to find a reliable supply  
of S.S. lock nuts.) Measure the O.D. of the pipe and  
choose from 7 sizes - 1-3/8", 1-1/2", 1-5/8" - \$5.50ea.  
1-3/4", 1-7/8", 2", 2-1/8" - \$6.25.

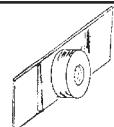


**Part No. M150**

(Please State Size)

**M132 NUT PLATE - for fastening of fenders to body**

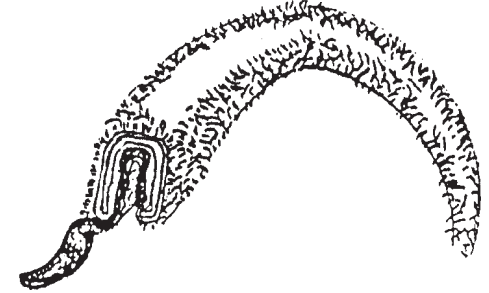
(also for MGB) 5/16-24 threaded barrel on rectangular plate as  
orig. MGA uses 46. **\$1.60 ea. (10 for \$15.00)**



## DOOR SEAL for MGA VEHICLES\* MGA OWNERS

The seal assembly is produced as original and features a specially formed flexible galvanized  
steel "skeleton" channel covered with a cotton backed plush wool material. The steel channel is  
made in house with a new progressive tool on one of our presses. The material has been dyed to  
match the original colors by the mill house that manufactures the material for us. New  
tooling was made to produce the properly shaped soft neoprene rubber extrusion which  
is attached to the covered channel with the original style spring steel clips. We are proud  
to say that with the exception of the clips all components are made in the U.S.A. The clips  
are made in Britain with original tooling.

**OUR SEAL IS NOT AVAILABLE FROM ANYONE ELSE and as far as we know no one else is producing the correct seal! The seal is fully assembled and guaranteed to fit a properly prepared surface as detailed in the instructions.**



Available in **BLACK** (coal) **RED** (rust) **TAN** (biscuit) **DARK RED** (scarlet) **GREY** (dove)  
and **DARK BLUE**

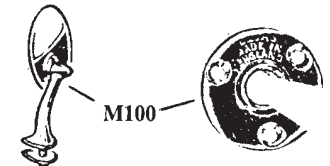
**P75A - Roadster (per set of two) - \$145.00**

**P75B - Coupe' (per set of two) - \$215.00**

\* This seal is also correct for the Jaguar XK150, MK 7/8/9 & many BMC Sedans including  
Magnette ZA/ZB. Ask for price. ( Can be used on MkI Sprite - \$145.00)

**M100 MIRROR RETAINER PLATE** - as used on typical

Lucas wing mirrors of the 50s & 60s. Exact reproduction made  
from brass, polished and chrome plated with "LUCAS MADE IN  
ENGLAND" script stamped into metal. These can be retro-fitted  
to original or reproduction mirrors. (3 screws not included and not  
available from CSR at present) **\$11.00 ea. / \$20.00 for two.**



**MORE SPECIAL CLIPS & CLAMPS** for British Cars MG/AH ... all exacting reproduc-  
tions made with new tooling developed by CSR!

**M37-41** (BMC No. 11K9095) Double/Elongated style Clip - harness to bulkhead ...  
big Healey cars. Made from brass and plated as original. 1 per veh.  
**\$2.50 ea.**

**M37-42** (BMC No. 2H400) Double slotted hold-down clamp for 3/16" brake pipes  
... 100-6/3000 Healeys. Plated steel. **\$1.75 ea.** 1 per veh.

**M37-43** (BMC No. AHH6690) Double/Elongated style Clip - harness/bat. cable to  
body ...MGB cars. Plated steel. **\$2.05 ea.** 1 per veh.

**M37-44** (BMC No. PCR0307-Small Variation) - single loop clip used to fasten  
fresh air cable - all big Healey and BN4/6 therm. cap. tube. (4 used) Up to  
5 per vehicle **.85 ea.**

**M37-45** Double/Elongated style clip for early MGB fuel bowl overflow pipes. Produced  
as original from steel and plated. (Attaches to side of engine block) **\$1.75 ea.**

**MG-T** Series Owners - CSR is now producing an extensive range of original style  
loop clips and spring steel clips. Please contact us for additional information.

**M37-47(H)** (BMC No. CHR0405) Half style Clip as used on MkI Sprite Harness to RH sill.  
**.80ea. 2 per veh**

**M37-48** (BMC Nos.1G2602 / 12H981) Clip for vent pipe-side of MGA eng. block.  
Originally tack welded to pipe. **\$3.50 ea.**

**M37-49** (Austin No. 2H161??) Clip for AH 1004 fuel pipe from carb. to flex. pipe.  
**\$1.50ea. 1 per veh.**

# CSR

## Clarke Spares & Restorations

P.O. Box 1501, Doylestown, PA 18901 USA  
215-348-0595 • FAX 215-348-4160 • Shop 215-822-6411  
clarkespares@att.net  
www.clarkespares.com



M137 - I.D. TAGS - for S.U. Carbs  
Two shapes and sizes now available.  
See info inside!



"Parts and services for the complete MGA"

TO



**AH1010** - STUD FITTING for Big Healey Grill  
Supplied plated with nuts and washers  
2 (plus) used. \$2.75 ea.



**F132** - "T" STUD/PLATE ASSEMBLY for  
mounting finishing strips to bottom of  
MGA body. These rearhead stud fasten-  
ers are as original and will fit original  
and reproduction trim strips. Includes  
washers and nut. Supplied plated.  
10 per vehicle .85 ea.

### New Addresses

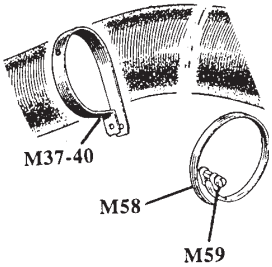
All Mail & Parcels sent via the U.S.P.S  
P.O. Box 1501, Doylestown, PA 18901 USA

All Parcels & Correspondence via UPS, FedEx, Freight/Common Carriers:  
46 Cedar Hill Rd. Chalfont, PA 18914 USA

## November, 2011 UPDATE

## HIGHLIGHTS - NEW PRODUCTS

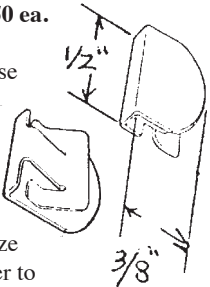
**M37-40 METAL CLAMP** for 4" air hose. Exact reproduction with all holes and end radii. Supplied in semi-gloss black powder paint finish. Typical clamp used on many BMC vehicles (AHH 5714) MGA uses 3 ..... **\$3.50 ea.**



**M58 ARBER CLAMP** for 4" air hose. Supplied with cotter key fitting . . . plated. MGA pushrod cars use 1 . . . Twin Cam cars use 2 ..... **\$2.75 ea.**  
Correct for AH100 to early 3000 cars.

**M59 SLOTTED HEX FITTING** for M58 style clamp. An exact reproduction of the original which can be retrofitted to M58 clamp ..... **\$3.50 ea.**

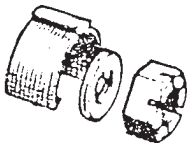
**"D" TYPE - EDGE FASTENERS** . . . two sizes now available. These spring steel fasteners are used to grip material to steel edges Upholstery applications - seat covers to frame, etc. Blackened finish as original.



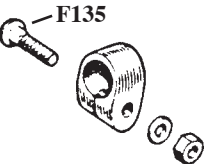
**FS021** - PIPING to top of MGA FASCIA/INSTRUMENT PANEL - Set of 8 \$2.50. (BMC Part. No. ADA 833) This size will fasten up to double thickness of typical thin vinyl/leather to 19/20 gauges metal (.030" to .040") edge. This clip was also used on many other British vehicles.

**FS022** - "Larger" version of above clip . . . for thicker material, etc. Perfect for many currently available reproduction seat covers where thicker than original vinyls and leathers are used, etc. BMC Sedans, Austin Healey, Jaguar, etc. ("panel range" - approx. 50% more than FS021) **.35 ea. / \$7.00 for 25**

**M129** - GREASE RETAINER - for front hub - wire wheel cars. Spring steel stamping with rubber seal attached as original. MGA/MGT. 2 per veh.(BMC No. ATB4131) This part has not been available for many years! **\$10.00 ea (2 for \$18.50)**



**F135** - CHROMED SCREW WITH WASHER AND NUT- for adjustable steering col. upper clamp. Exacting reproduction of the sq. neck low profile round head screw. Partial threaded 5/16-24 shank. Can be retrofitted to repro. clamps as supplied by other companies. **\$2.50 ea.**



### MGA FACTORY HARDTOP - BRACKETS & HARDWARE

Parts supplied individually and in kits.

Alum. Hardtop Kit - \$195.00 Fibreglass Hardtop Kit - \$145.00  
inquire about individual piece prices...specify part.